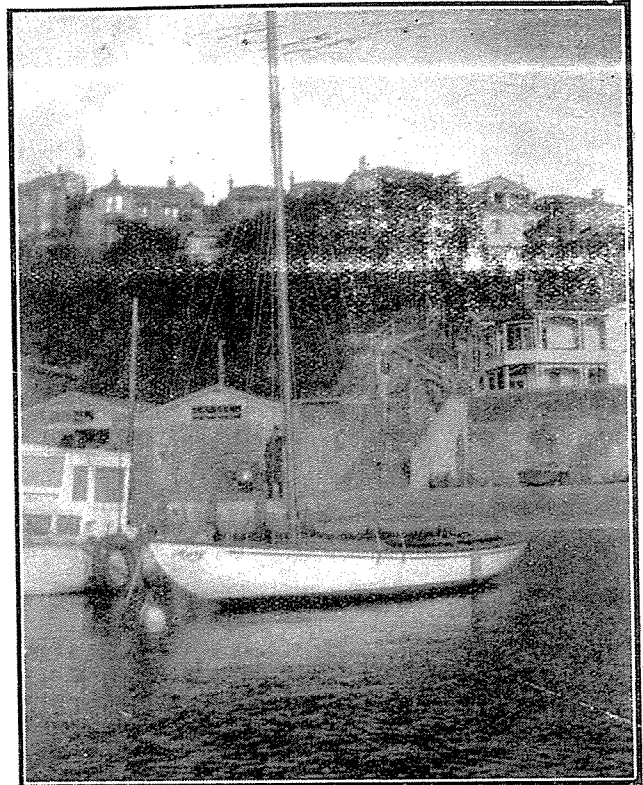


An Unusual CENTREBOARDER

THE YACHT "MARY"

By Kedge



The "Mary"

An unusual half-decked centre-board yacht appeared in Wellington last season, owned by Mr. M. O. Barnett. The "Mary," as she is named, came from the yards of Messrs. Morgan and Olsson, of Picton, and was built to American plans. She is 18ft. 11in. overall, with a maximum beam of 6ft. 6in., and draws 23in. aft (centre plate up).

The planking is of mahogany, the decks of varnished natural Oregon pine, while all metal fittings are chromium-plated brass. "Mary" is Bermudian rigged, and originally carried a 26ft. mast, but this was reduced to 22ft. to make her more suitable for Wellington conditions, and the sail plan altered accordingly. On account of the round bottom construction, heavy ballast is needed, and about 400lbs. of sand is carried in bags below the decks. The centre-plate, of galvanised steel, is raised by means of a tackle attached to the mast.

As will be seen from the accompanying plan, the cockpit is very small, limiting the crew

to four at the most. This is a disadvantage in a boat of this size, but on the other hand it



Advertisers—

Changes of Copy for Advertisements are due at our office on the 30th of the month (i.e., 30th of March for April issue, and so forth).

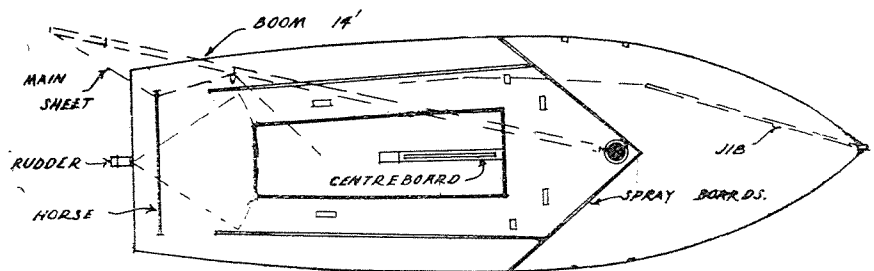
The N.Z. Yachtsman



renders the boat immune from the danger of sinking after a

capsize. The "Mary" is easy to handle, except for one point; the tiller has not a wide enough range of action, as it catches on the spray boards, but this is fairly easily rectified. In the after end of the cockpit, provision is made for the fitting of an auxiliary engine, but it is doubtful if one will be fitted by the present owner.

It is possible that readers will hear more of the "Mary" when next season's racing starts.



L.O.A. 18' 11"
L.W.L. 16' 6"
MAX. BEAM 6' 6"